

# 2012 Update to the Plum Creek Watershed Protection Plan

**DEVELOPED BY  
THE PLUM CREEK WATERSHED PARTNERSHIP  
May 2012**





# 2012 Update to the Plum Creek Watershed Protection Plan

Prepared for the  
Plum Creek Watershed Partnership  
by  
Nikki Dictson and Mark McFarland

Texas AgriLife Extension Service  
Department of Soil and Crop Sciences  
College Station, Texas 77843-2474



<http://plumcreek.tamu.edu>



Funding for the development of the Plum Creek Watershed Protection Plan and this Update to the WPP is provided through federal Clean Water Act §319(h) grants to the Texas AgriLife Extension Service from the Texas State Soil and Water Conservation Board and the U.S. Environmental Protection Agency

## Table of Contents

List of Figures.....	v
List of Tables.....	vi
Overview.....	1
Progress Toward Implementation Milestones.....	2
Urban Stormwater Management.....	4
Urban Stormwater Management.....	7
Street Sweeping.....	7
Urban Stormwater Assessments and Mapping.....	7
Urban Stormwater Markers, Inlet Protection Filter Devices, and No Dumping Campaigns.....	7
Retention Retrofits.....	8
Luling Stormwater Structure.....	9
Ordinance to Include the Use of Mulch Tubes.....	9
Stormwater Management and Illicit Discharge Survey.....	10
Urban Waterfowl Management.....	10
Dog Waste Management.....	10
Hays County Development Regulations.....	11
Wastewater Management.....	12
Wastewater Management.....	12
Regional Water And Wastewater Planning Studies.....	12
Kyle Water Reuse Feasibility Study.....	13
Buda Water Reuse Projects.....	13
Regional Wastewater Compact.....	14
Sewer Pipe Replacement and New Sewer Service.....	14
New Discharge Permit in the Plum Creek Watershed.....	16
Voluntary Effluent Monitoring by WWTF.....	16
New <i>E. coli</i> Effluent Limits and Monitoring Requirements for Permitted WWTFs.....	16
Phosphorus Removal.....	17
Recommended Facility Upgrades and SCADA.....	17
Plum Creek Community Install Wet Well with Bar Screens to Reduce TSS in Effluent for Reuse.....	18
Septic System Connection to Sewer.....	18
Wastewater in the Counties.....	19
Agricultural Nonpoint Source Management.....	20
Wildlife and Non-Domestic Animal Management.....	25
Feral Hog Control.....	26
Wildlife Surveys.....	28
Outreach and Education Strategy.....	29
Public Education.....	29
Plum Creek Watershed Protection Plan.....	29

Watershed Protection Campaign Brochure.....	29
Partnership Website .....	30
News Releases .....	30
Newsletter .....	30
Texas Watershed Steward Workshops.....	31
Volunteer Monitoring.....	31
GBRA's Plum Creek School Water Quality Project.....	32
Plum Creek Watershed Kiosks in Kyle, Lockhart, and Luling .....	33
Tributary and Watershed Roadway Signage.....	33
Outreach at Local Events .....	33
Rainwater Harvesting Education.....	33
<b>Urban Outreach .....</b>	<b>34</b>
NEMO Workshops.....	34
Online Stormwater Management Module .....	34
Stormwater Management Demonstrations.....	34
Site Assessment Visits.....	34
Urban Sector Turf and Landscape Management .....	34
Household Hazardous Waste Collection Events .....	35
<b>Septic System Outreach .....</b>	<b>35</b>
Septic System Online Module .....	35
Septic System Workshops.....	35
<b>Municipal Wastewater Outreach .....</b>	<b>36</b>
Online Wastewater Treatment Facility Module .....	36
Online Fats, Oils, and Grease Module.....	36
Fats, Oils, and Grease Workshops .....	37
<b>Agricultural Outreach.....</b>	<b>37</b>
Soil and Water Testing Campaigns .....	37
Nutrient, Crop, and Livestock Grazing Management Education .....	37
Lone Star Healthy Streams Program.....	37
Agricultural Waste Pesticide Collection Events .....	38
<b>Feral Hog Management Outreach.....</b>	<b>38</b>
Feral Hog Control .....	38
Feral Hog Management Workshops .....	38
Technical Assistance .....	38
Feral Hog Reporting System.....	39
Feral Hog Management FactSheets.....	39
<b>Stream and Riparian Workshops .....</b>	<b>40</b>
<b>Illegal Dumping/Litter Prevention Campaign.....</b>	<b>40</b>
<b>Community Clean Up Events in Lockhart and Kyle .....</b>	<b>41</b>
<b>Measures of Success.....</b>	<b>42</b>
Routine Water Quality Monitoring Data.....	42
GBRA Routine Monitoring Results .....	45
Analysis of Water Quality Trends at CRP Stations .....	52
GBRA Targeted Monitoring Results.....	54
Rainfall Patterns from January 2008-November 2011 .....	57
Stream Biological Assessments.....	57

Soil and Water Assessment Tool (SWAT).....	59
Bacterial Source Tracking (BST).....	59
Nitrate Nitrogen Isotope Study.....	60
Bacteria Reductions .....	61
Adaptive Management.....	63
Implementation Schedules and Milestones.....	64
Program Coordination and Partnership Sustainability .....	71
<b>Other Developments.....</b>	<b>73</b>
City of Kyle Plum Creek Preserve.....	73
State Highway 130 Wetland Mitigation.....	73
Central Texas Greenprint for Growth.....	74
Oil Spill Detection and Repair .....	75
Flood Control.....	75
<b>Appendix A : Updated Appendix J Management Practice Efficiencies .....</b>	<b>77</b>
Urban Management Practices.....	77
Urban Management Practice References .....	82
Agricultural Management Practices.....	88
Agricultural Management Practice References.....	91

## List of Figures

Figure 1. Subwatersheds identified for Plum Creek .....	3
Figure 2. Maps showing locations of SH 130 Segments 5 & 6 through Plum Creek Watershed.....	4
Figure 3. Lower portion of Austin urbanized area map of stormwater entities as defined by the 2000 Census; includes the City of Buda .....	6
Figure 4. New street sweeper purchased by the City of Kyle.....	7
Figure 5. No dumping markers on stormdrains in Kyle and Lockhart .....	8
Figure 6. Lockhart storm drain inlet protection and storm drain marker .....	8
Figure 7. Retrofit Design #1 for Lower Plum Creek at the Steeplechase Park Detention Facility .....	9
Figure 8. Retrofit #2 Design of Upper Plum Creek drainage swale at Spring Branch Subdivision .....	10
Figure 9. Pet waste stations installed in City Parks in Lockhart and Kyle.....	11
Figure 10. Recommended regional wastewater facilities in Caldwell County .....	13
Figure 11. Brochure produced for the Plum Creek WPP.....	29
Figure 12. The Plum Creek Current .....	30
Figure 13. Map of volunteer monitoring locations in Plum Creek Watershed .....	32
Figure 14. 2008 Presidential Award for Outstanding Effort Toward Public Outreach and Communication for wastewater module .....	36
Figure 15. Two examples of feral hog management factsheets developed for the watershed .....	40
Figure 16. Community stream clean up events during 2010 in Lockhart and Kyle .....	41
Figure 17. Water quality monitoring in the Plum Creek Watershed.....	43
Figure 18. Umland CRP routine station and water quality trend analysis for <i>E.coli</i> , nitrate nitrogen, and total phosphorus.....	52
Figure 19. Lockhart CRP routine station and water quality trend analysis for <i>E.coli</i> , nitrate nitrogen, and total phosphorus .....	53
Figure 20. Luling CRP routine station and water quality trend analysis for <i>E.coli</i> , nitrate nitrogen, and total phosphorus .....	54
Figure 21. Rainfall data from 2008-2011 compared to the long-term average.....	57
Figure 22. Relationships of nitrogen and oxygen isotopes and the nitrogen cycle .....	60
Figure 23. Wetland mitigation site for SH 130 in the Plum Creek Watershed.....	74
Figure 24. Locations of Plum Creek Conservation District dams at sites 5, 6, and 8 that have received funding for rehabilitation from USDA-NRCS.....	76

## List of Tables

Table 1.	Timeline of implementation grants received since completion of the WPP .....	2
Table 2.	Updated Table 2.2 showing the population of incorporated cities completely or partially within the watershed based on the 2000 and 2010 Census .....	5
Table 3.	Updated Table 2.3 showing the population of counties partially within the Plum Creek Watershed based on the 2000 and 2010 Census.....	5
Table 4.	Revised Table 7.3 in WPP. TPDES Wastewater Discharge Permits in Plum Creek Watershed .....	15
Table 5.	Recommended number of Management Plans for Livestock Operations by subwatershed .....	23
Table 6.	Recommended number of Management Plans for Cropland Operations by subwatershed .....	24
Table 7.	Recommended number of feral hogs to be removed and number of hogs that have been removed by subwatershed.....	27
Table 8.	Lockhart hazardous waste collection event results during 2010 and 2011.....	35
Table 9.	Onsite wastewater training in Plum Creek .....	36
Table 10.	2010 Texas Integrated Report impairments and concerns for Plum Creek.....	42
Table 11.	Plum Creek monitoring locations and types of sampling .....	44
Table 12.	Water quality monitoring results for <i>E. coli</i> at routine stations in Plum Creek categorized by meteorological conditions during sampling (dry or wet weather).....	46
Table 13.	Water quality monitoring results for phosphorus at routine stations in Plum Creek categorized by meteorological conditions during sampling (dry or wet weather).....	47
Table 14.	Water quality monitoring results for nitrate nitrogen at routine stations in Plum Creek categorized by meteorological conditions during sampling (dry or wet weather).....	48
Table 15.	Water quality monitoring results for ammonia-nitrogen at routine stations in Plum Creek categorized by meteorological conditions during sampling (dry or wet weather).....	49
Table 16.	Wastewater treatment plant water quality monitoring results in the Plum Creek .....	50
Table 17.	Water quality monitoring results for three spring sites in the Plum Creek.....	51
Table 18.	Routine and targeted monitoring data in the Plum Creek Watershed categorized by meteorological conditions during sampling (dry or wet weather) .....	55
Table 19.	Stream biological assessments at sites on Plum Creek .....	58
Table 20.	Stream classifications assigned based on IBI scores for the site .....	58
Table 21.	Table 5.1 from WPP updated footnotes – Annual load characteristics and <i>E. coli</i> reductions for each station (in billions of cfu) .....	61
Table 22.	Revised Table 10.3 in WPP. Estimated regional pollutant load reductions expected upon full implementation of the Plum Creek WPP .....	62
Table 23.	Revised Table 9.1 utilizing CRP data for February 2008 to establish <i>E. coli</i> interim targets to evaluate process over 10-year implementation period .....	64
Table 24.	Computed actual geometric means for <i>E. coli</i> based on 3-years of data .....	65
Table 25.	Progress toward implementation of management measures identified in Table 10.1 of the Plum Creek WPP .....	66
Table 26.	Progress toward implementation of management measures identified in Table 10.2 of the Plum Creek WPP .....	69



# Overview

The Plum Creek Watershed Partnership completed and began implementation of the Plum Creek Watershed Protection Plan in February 2008 in an effort to guide the restoration and protection of water quality in Plum Creek and its tributaries. Since that time, significant changes have taken place in the Plum Creek watershed. The region has endured the most severe drought on record, resulting in all but those areas immediately below springs or effluent discharges running dry. Dry conditions in the Plum Creek watershed throughout most of 2007-2011 dramatically impacted the landscape and substantially affected pollutant loading characteristics throughout the watershed. In addition, large swaths of the watershed have been transformed by the continued construction of State Highway 130. New commercial and residential development has followed this work and also has continued in the area around Kyle and the Interstate 35 corridor. These changes have altered land use and management in many areas, affecting the implementation of some strategies.

Acknowledging and understanding these shifts in the watershed are key to adaptive management, as the most appropriate actions for some areas likely will change over time as a result. Combined with continued intensive water quality monitoring of the watershed, necessary adjustments can be made in response to these shifts to enable continued progress toward the water quality goals established in the plan.

Successful watershed management is neither a simple, predetermined series of steps nor a “quick fix” that guarantees watershed improvement. Rather, it is a long-term commitment to stewardship of water and other ecological resources. To maintain the greatest likelihood of success, consistent re-evaluation and adaptive management based on new data and observed trends in the watershed is critical.

This document functions as:

- a progress report on efforts to implement the Plum Creek WPP since its initial release in February 2008 through November 2011
- a modification to the goals and strategies identified in the WPP, the implementation schedule, interim milestones, and supporting documentation
- an analysis of collected water quality data to ascertain interim progress in achieving water quality restoration



# Progress Toward Implementation Milestones

The Plum Creek Watershed Protection Plan was designed by the local steering committee and partnership to identify strategies, management measures, outreach and education within the watershed to reduce pollutants and improve water quality in the Plum Creek Watershed. Since the completion of the WPP the Partnership has accomplished many of these measures, which are outlined in this update. Table 1 shows the timeline of grants received during implementation. An analysis of water quality data is also included in this update. Figure 1 identifies subwatersheds within each monitoring region as established in the WPP. These subwatersheds were used to prioritize areas for implementation.

**Table 1. Timeline of implementation grants received since completion of the WPP.**

<b>Extension WPP</b>	[Light Blue Bar]				[Light Blue Bar]				[Light Blue Bar]				[Light Blue Bar]										
<b>Extension IP</b>	[Light Blue Bar]				[Light Blue Bar]				[Light Blue Bar]				[Light Blue Bar]										
<b>TCEQ 106 Grant</b>	[Dark Blue Bar]																						
<b>GBRA WQ Monitor.</b>	[Teal Bar]				[Teal Bar]				[Teal Bar]				[Teal Bar]										
<b>Feral Hog IP</b>	[Yellow Bar]				[Yellow Bar]				[Yellow Bar]				[Yellow Bar]										
<b>WQMP IP</b>	[Green Bar]				[Green Bar]				[Green Bar]				[Green Bar]										
<b>Kyle TCEQ Grant</b>	[Grey Bar]				[Grey Bar]				[Grey Bar]														
<b>Lockhart TCEQ Grant</b>					[Grey Bar]				[Grey Bar]				[Grey Bar]										
<b>GBRA IP Coordination</b>													[Purple Bar]										
<b>Timeline of Dates</b>	Feb-08	May-08	Aug-08	Nov-08	Feb-09	May-09	Aug-09	Nov-09	Feb-10	May-10	Aug-10	Nov-10	Feb-11	May-11	Aug-11	Nov-11	Feb-12	May-12	Aug-12	Nov-12	Feb-13	May-13	Aug-13

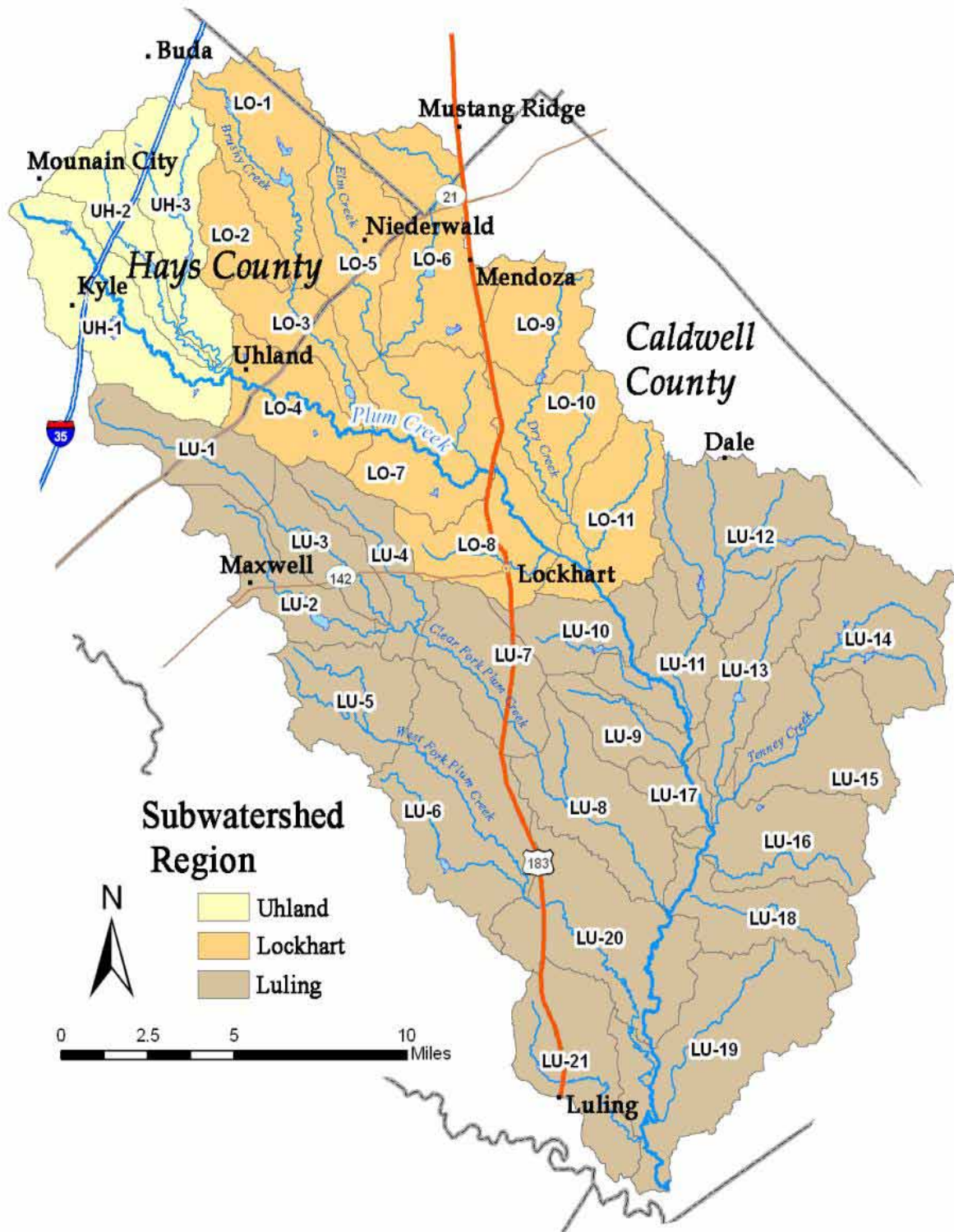


Figure 1. Subwatersheds identified for Plum Creek.